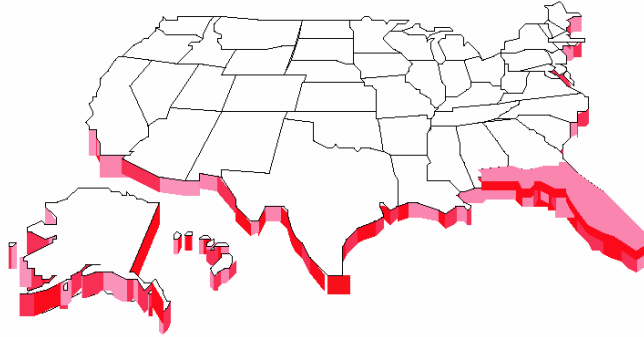


How Florida Compares



State and Local Taxes
in Florida and the Nation
January 2006



"Improving taxpayer value, citizen understanding, and government accountability"

About Florida TaxWatch

Florida TaxWatch is a private, non-profit, non-partisan research institute that over its 25 year history has become widely recognized as the watchdog of citizens' hard-earned tax dollars. Its mission is to provide the citizens of Florida and public officials with high quality, independent research and education on government revenues, expenditures, taxation, public policies and programs and to increase the productivity and accountability of Florida Government.

Florida TaxWatch's research recommends productivity enhancements and explains the statewide impact of economic and tax and spend policies and practices on citizens and businesses. Florida TaxWatch has worked diligently and effectively to help state government shape responsible fiscal and public policy that adds value and benefit to taxpayers.

This diligence has yielded impressive results: since 1979, policy makers and government employees have implemented three-fourths of Florida TaxWatch's cost-saving recommendations, saving the taxpayers of Florida more than \$6.2 billion--approximately \$1,067 in added value for every Florida family.

Florida TaxWatch has a historical understanding of state government, public policy issues, and the battles fought in the past necessary to structure effective solutions for today and the future. It is the only statewide organization devoted entirely to Florida taxing and spending issues. Its research and recommendations are reported on regularly by the statewide news media.

Supported by voluntary, tax-deductible memberships and grants, Florida TaxWatch is open to any organization or individual interested in helping to make Florida competitive, healthy and economically prosperous by supporting a credible research effort that promotes constructive taxpayer improvements. Members, through their loyal support, help Florida TaxWatch to bring about a more effective, responsive government that is accountable to the citizens it serves.

Florida TaxWatch is supported by all types of taxpayers—homeowners, small businesses, large corporations, philanthropic foundations, professionals, associations, labor organizations, retirees—simply stated, the taxpayers of Florida. The officers, Board of Trustees and members of Florida TaxWatch are respected leaders and citizens from across Florida, committed to improving the health and prosperity of Florida.

With your help, Florida TaxWatch will continue its diligence to make certain your tax investments are fair and beneficial to you, the taxpaying customer, who supports Florida's government. Florida TaxWatch is ever present to ensure that taxes are equitable, not excessive, that their public benefits and costs are weighed, and that government agencies are more responsive and productive in the use of your hard-earned tax dollars.

The Florida TaxWatch Board of Trustees is responsible for the general direction and oversight of the research institute and safeguarding the independence of the organization's work. In his capacity as chief executive officer, the president is responsible for formulating and coordinating policies, projects, publications and selecting the professional staff. As an independent research institute and taxpayer watchdog, Florida TaxWatch does not accept money from Florida state and local governments. The research findings and recommendations of Florida TaxWatch do not necessarily reflect the view of its members, staff, distinguished Board of Trustees, or Executive Committee and are not influenced by the positions of the individuals or organizations who directly or indirectly support the research.

Florida TaxWatch Values

◆ Integrity ◆ Productivity ◆ Accountability ◆ Independence ◆ Quality Research

How Does Florida Compare? FY 2004 State and FY 2002 Local Taxes

This is Florida TaxWatch's annual report of how Florida's state and local taxes compare with those of the other 49 states. While still lower than the national average, Florida's tax burden rankings are rising. As the states started recovering from the last recession, tax collections and tax burdens have been rising nationwide. Some of this is from increased taxes, some from economic growth. Florida's tax collections have grown faster than most states, so our tax burden rankings are rising. In Florida, this is happening despite the fact that there have been no state tax increases and even some tax cuts. A stronger economy has produced robust tax growth.

From 2000 to 2004, Florida's total state tax collections grew 24%. This is the third largest growth in the nation and compares to 10% growth nationally. Florida's tax structure performed well during the recession, when our tax collections continued to have positive growth, while total collections actually fell nationally. In 2004, Florida had growth of 12%, compared to 8% nationally. This led to a significant jump in our state tax burden ranking.

State Taxes. Floridians' state tax burden rose five spots to 35th in FY 2004, the state's highest ranking since 1988. Those per capita state tax collections have risen 19% in just two years, causing its rank to climb nine spots. As a percent of personal income (6.0%), Florida ranks 38th in state taxes. This is up four spots from the prior year, when the burden was 5.4%. The national average in 2004 was 6.5%.

Combined State and Local Taxes. Florida's combined per capita state and local tax burden is also rising. The state's ranking climbed three spots to 32nd in 2003 (latest available data). As a percent of personal income, it's combined state and local ranking is 44th (up one spot).

A Note About the Data and a Look Ahead

The U.S. Census, which produces the state-by-state tax data used in this report, has scaled back its efforts in reporting local taxes. While FY 2004 state data is available, local data by state has not been released since FY 2002. We used data from the Tax Foundation to estimate combined state and local taxes for 2003.

Local tax collections have been growing rapidly in Florida. Fueled by skyrocketing property values, property tax collections have risen 46% from 2001 to 2005, including double-digit growth the last two years. Without data from other states it is hard to make comparisons, but it is likely that Florida's local and combined state and local rankings for 2004 would be higher than what is in this report. Coupled with estimated state general revenue growth of 9.2% in 2004, 14.4% in 2005, and 5.8% in 2006, it appears that Florida's tax ranking climb is not quite over.

Key Facts and Findings

■Floridians' per capita state tax burden rose five spots to 35th in FY 2004, the state's highest ranking since 1988. Florida's per capita total state tax collections have risen 19% in just two years, causing its rank to climb nine spots. It is remarkable that this robust growth has occurred without any new tax increases and, in fact, there have been some tax cuts. This tax growth has been driven by Florida's economy.

■Florida's combined per capita state and local tax burden is also rising. The state's ranking climbed three spots to 32nd in 2003 (latest available data). With local property taxes growing by double-digits in both 2004 and 2005, this is a trend we expect to continue.

■Because this tax growth has been coupled with increasing income, Florida's tax burden expressed as a percentage of personal income remains lower than its per capita rankings. The state's 2004 tax burden using this measure is 38th (up four spots). Its combined 2003 state and local ranking is 44th (up one spot). Again, if more recent local data was available for all the states, Florida 2004 ranking would likely be higher.

■State taxes take 6.0% of Floridians' personal income, and state and local combine to take out 9.4%. This compares to the national average of 6.5% and 10.5%, respectively. This is the first time Florida's state percentage has reached 6% since 1997.

■Transaction taxes (general and selective sales taxes) account for 77% of all Florida's state tax collections. This compares to the national average of 49%. These consumption taxes fueled much of Florida's tax growth. General sales tax collections increased by \$118 per capita due mostly to increased spending, and our per capita sales tax ranking rose from 6th to 3rd highest in the nation. Florida's per capita selective sales taxes (on motor fuels, tobacco, alcoholic beverages, etc.) rose from 25th to 21st.

■Florida's housing sector has also produced a lot of revenue for the state. Per capita documentary stamp and real estate transfer taxes, already the nation's highest, rose another 28% in 2004, due mostly to increased loans for home purchases.

■Florida is one of seven states without a personal income tax. Of the four largest states, Florida and Texas have no personal income tax.

■Businesses pay nearly half (48%) of all state and local taxes in Florida. This is the 13th highest percentage in the nation and higher than the national average of 43%.

Summary of Tax Rankings FY 2004

Taxes Per Capita

Tax	Florida	Rank	U.S. Average
State Taxes	\$1,769	35	\$2,025
General Taxes	998	3	677
Selective Taxes	365	21	326
Documentary Stamp	187	1	27
License	102	33	135
Corporate Income	77	28	105
Property	15	20	39
Personal Income	No Tax	No Tax	674
Local Taxes (FY 2002)	1,166	21	1,285
Property	919	21	938
State and Local Taxes (FY 2003)	2,784	32	3,221

Taxes Per \$1000 Personal Income

Tax	Florida	Rank	U.S. Average
State Taxes	\$60.10	38	\$64.82
General Taxes	33.90	5	21.67
Selective Taxes	12.41	20	10.45
Documentary Stamp	6.35	1	0.87
License	3.47	33	4.32
Corporate Income	2.63	30	3.36
Property	0.51	21	1.25
Personal Income	No Tax	No Tax	21.56
Local Taxes (FY 2002)	39.84	24	42.01
Property	31.33	20	30.61
State and Local Taxes (FY 2003)	90.44	44.00	104.59

Source: Florida TaxWatch from U.S. Department of Commerce data, December 2005.

Floridians' Per Capita State Tax Burden Rises Nine Spots in Two Years

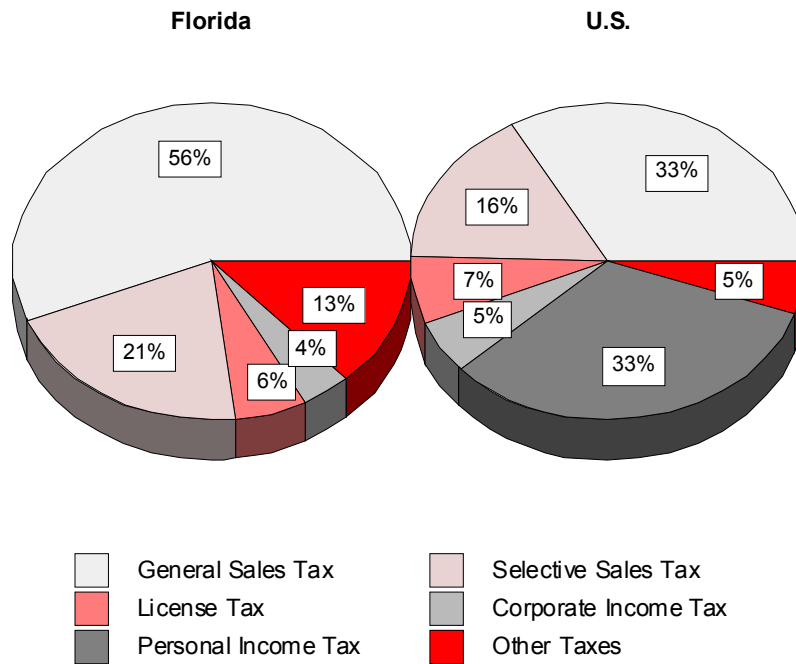
Total Per Capita State Taxation FY 2004

State	Dollars	State	Dollars
1. Hawaii	\$3,047.61	26. Ohio	\$1,961.39
2. Wyoming	2,968.00	27. North Carolina	1,940.79
3. Connecticut	2,937.01	28. North Dakota	1,938.31
4. Minnesota	2,888.63	29. Kansas	1,931.17
5. Delaware	2,862.03	30. Indiana	1,916.88
6. Vermont	2,844.96	31. Virginia	1,907.92
7. Massachusetts	2,602.26	32. Idaho	1,900.78
8. New Jersey	2,411.94	33. Oklahoma	1,823.70
9. California	2,388.18	34. Louisiana	1,777.13
10. New York	2,383.82	35. Florida	1,768.56
11. Michigan	2,379.22	36. Mississippi	1,765.32
12. Wisconsin	2,274.66	37. Montana	1,753.71
13. Washington	2,239.74	38. Utah	1,753.53
14. Rhode Island	2,228.36	39. Iowa	1,737.69
15. Maryland	2,215.69	40. Oregon	1,697.66
16. Maine	2,199.51	41. Arizona	1,672.41
17. New Mexico	2,102.88	42. Georgia	1,650.31
18. Nebraska	2,083.46	43. South Carolina	1,620.67
19. West Virginia	2,065.57	44. Tennessee	1,616.00
20. Pennsylvania	2,043.11	45. Missouri	1,584.65
21. Kentucky	2,041.34	46. Alabama	1,549.28
22. Nevada	2,029.50	47. New Hampshire	1,542.61
23. Arkansas	2,027.13	48. Colorado	1,532.59
U.S. Average	2,024.85	49. South Dakota	1,378.37
24. Illinois	2,004.92	50. Texas	1,367.36
25. Alaska	1,966.66		

Florida's 5-Year History	Rank	Dollars	% of U.S. Average
2000	43	\$1,552.79	80.8%
2001	45	\$1,523.13	77.5%
2002	44	\$1,484.82	80.1%
2003	40	\$1,580.90	83.9%
2004	35	\$1,768.56	87.3%

Source: Florida TaxWatch from U.S. Department of Commerce data, December 2005.

Percentage of Total State Taxes Provided by Each Source



Transaction Taxes = Sales Taxes + Selective Sales Taxes

Florida = 77%

U.S. = 49%

Source: Florida TaxWatch and U.S. Department of Commerce data, December 2005.

Floridians' Per Capita State & Local Tax Burden Rises to 32nd

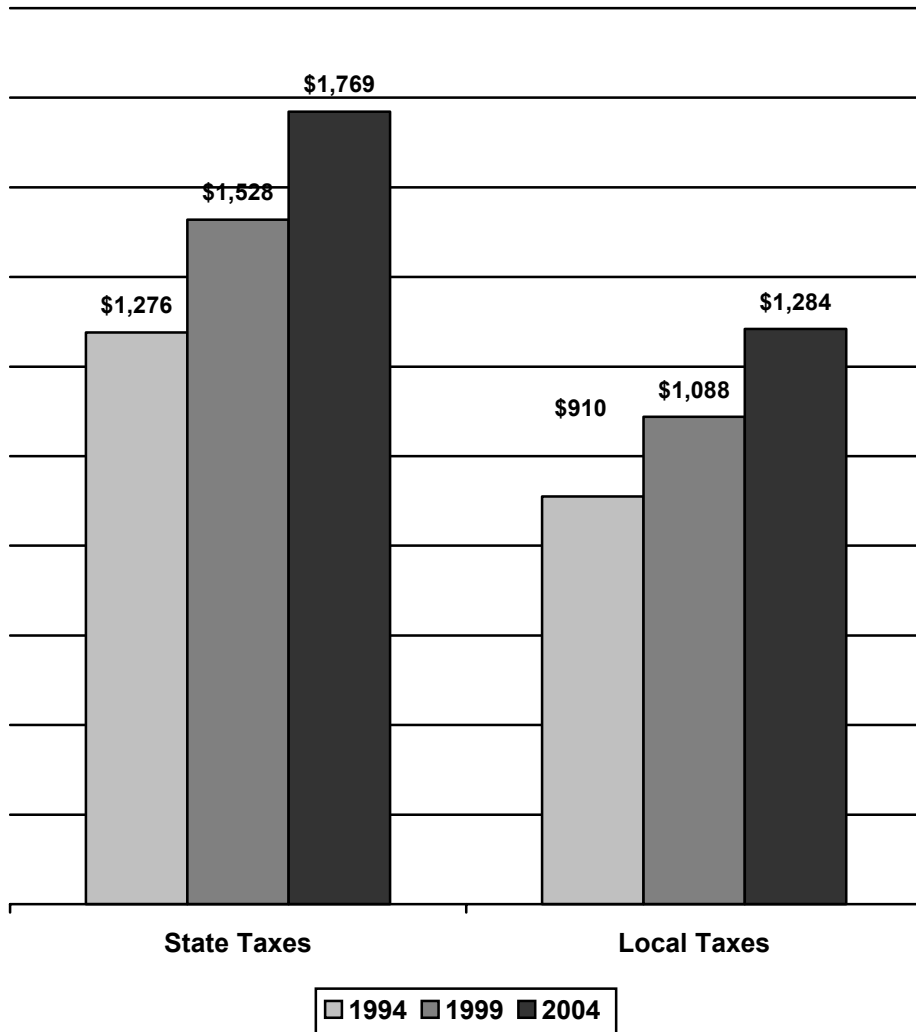
Total Per Capita State and Local Taxation FY 2003

State	Dollars	State	Dollars
1. New York	\$4,581.71	26. Indiana	\$3,003.89
2. Connecticut	4,569.16	27. Iowa	2,886.50
3. New Jersey	4,285.47	28. New Hampshire	2,881.82
4. Wyoming	3,948.67	29. North Dakota	2,868.02
5. Massachusetts	3,928.22	30. Georgia	2,798.46
6. Minnesota	3,760.30	31. Louisiana	2,793.56
7. Maryland	3,717.63	32. Florida	2,784.36
8. Maine	3,614.36	33. North Carolina	2,779.70
9. Rhode Island	3,562.94	34. Texas	2,756.51
10. Wisconsin	3,522.14	35. Kentucky	2,736.19
11. Hawaii	3,502.38	36. Oregon	2,728.34
12. California	3,501.81	37. Arizona	2,706.38
13. Nebraska	3,338.07	38. Missouri	2,691.89
14. Illinois	3,336.25	39. Utah	2,626.97
15. Washington	3,292.64	40. New Mexico	2,619.45
16. Vermont	3,282.22	41. West Virginia	2,611.92
17. Ohio	3,277.60	42. South Dakota	2,501.31
18. Delaware	3,260.72	43. Oklahoma	2,497.36
U.S. Average	3,220.94	44. Idaho	2,496.39
19. Alaska	3,212.97	45. South Carolina	2,460.00
20. Pennsylvania	3,190.86	46. Tennessee	2,458.65
21. Michigan	3,181.04	47. Montana	2,405.88
22. Virginia	3,089.93	48. Mississippi	2,371.47
23. Colorado	3,084.47	49. Arkansas	2,363.40
24. Kansas	3,075.86	50. Alabama	2,176.52
25. Nevada	3,026.16		

Florida's 5-Year History	Rank	Dollars	% of U.S. Average
1999	28	\$2,663.29	88.9%
2000	35	\$2,623.99	84.5%
2001	36	\$2,593.03	83.7%
2002	35	\$2,650.87	84.5%
2003	32	\$2,784.36	86.4%

Source: Florida TaxWatch from U.S. Department of Commerce data, December 2005.

Florida's Per Capita Tax Growth 1994-2004



*Note: 2004 local taxes are estimated.
Source: Florida TaxWatch from U.S. Department of Commerce data,
December 2005.*

Floridians' Local Tax Burden Closer to the National Average Than Their State Burden

Per Capita Local Taxation FY 2002

State	Dollars	State	Dollars
1. New York	\$2,381.04	26. Iowa	\$1,131.82
2. New Jersey	1,897.55	27. Missouri	1,127.18
3. Connecticut	1,760.23	28. Indiana	1,101.81
4. Maryland	1,658.67	29. Oregon	1,090.16
5. Colorado	1,548.00	30. Arizona	1,089.26
6. Alaska	1,522.37	31. Louisiana	1,076.32
7. Illinois	1,515.34	32. Minnesota	1,042.31
8. Maine	1,479.38	33. North Dakota	964.44
9. Wyoming	1,450.83	34. Utah	907.06
10. Massachusetts	1,411.46	35. Tennessee	892.89
11. Ohio	1,403.97	36. South Carolina	892.11
12. Rhode Island	1,396.86	37. Michigan	873.64
13. Texas	1,392.02	38. North Carolina	846.04
14. Nebraska	1,344.02	39. Oklahoma	781.11
15. New Hampshire	1,334.78	40. Montana	761.77
U.S. Average	1,284.69	41. Idaho	760.64
16. Virginia	1,281.89	42. Vermont	723.91
17. Pennsylvania	1,255.86	43. Alabama	715.19
18. Wisconsin	1,249.05	44. Kentucky	685.58
19. California	1,215.08	45. New Mexico	673.62
20. Georgia	1,201.66	46. Hawaii	657.74
21. Florida	1,166.05	47. Delaware	636.30
22. Kansas	1,165.91	48. Mississippi	624.94
23. Nevada	1,144.61	49. West Virginia	604.66
24. South Dakota	1,136.47	50. Arkansas	455.65
25. Washington	1,134.44		

Florida's 5-Year History	Rank	Dollars	% of U.S. Average
1998	23	\$1,035.82	92.8%
1999	20	\$1,088.37	93.9%
2000	20	\$1,071.17	90.4%
2001	18	\$1,069.90	94.5%
2002	21	\$1,166.05	90.8%

Source: Florida TaxWatch from U.S. Department of Commerce data, December 2005.

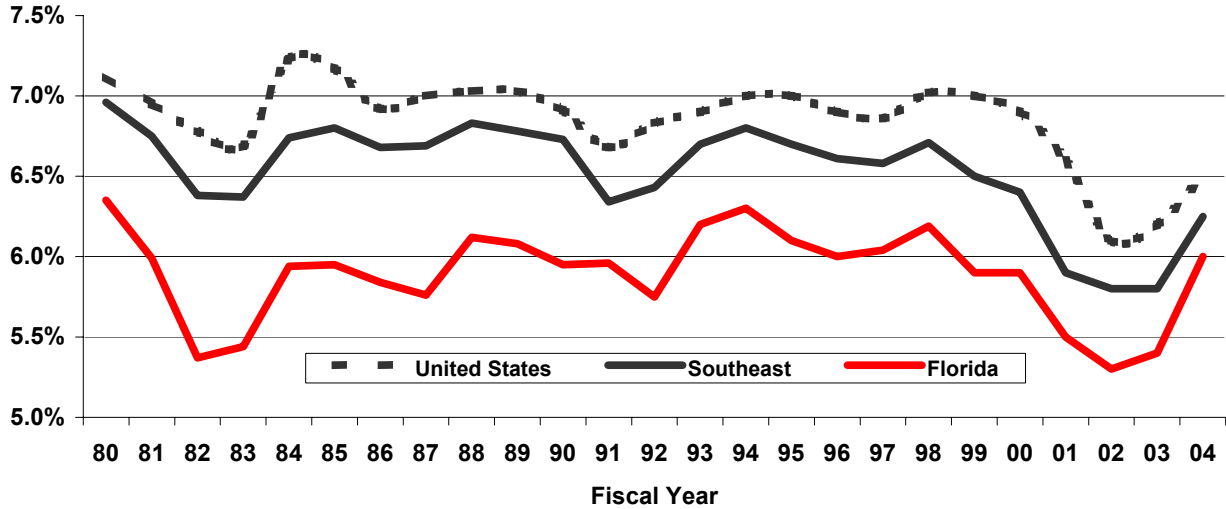
After Falling for Two Years, the Percent of Income Spent on State & Local Taxes Increased in 2003, In Florida and Nationally

State and Local Taxes as a Percent of Personal Income FY 2003

State	Dollars	State	Dollars
1. Maine	12.89%	26. Arizona	10.25%
2. New York	12.89%	27. Maryland	10.21%
3. Wyoming	12.78%	28. Illinois	10.19%
4. Hawaii	11.82%	29. Massachusetts	10.09%
5. Wisconsin	11.75%	30. Arkansas	10.07%
6. Nebraska	11.56%	31. Washington	10.07%
7. Rhode Island	11.48%	32. Delaware	10.04%
8. Minnesota	11.33%	33. North Carolina	10.01%
9. Ohio	11.26%	34. Idaho	9.87%
10. Vermont	11.09%	35. Alaska	9.86%
11. Louisiana	11.04%	36. Nevada	9.86%
12. West Virginia	10.89%	37. Montana	9.72%
13. New Jersey	10.88%	38. Georgia	9.69%
14. North Dakota	10.83%	39. Oklahoma	9.68%
15. Indiana	10.76%	40. South Carolina	9.66%
16. Kentucky	10.75%	41. Texas	9.61%
17. Connecticut	10.69%	42. Oregon	9.56%
18. California	10.67%	43. Missouri	9.48%
19. Kansas	10.65%	44. Florida	9.44%
20. New Mexico	10.59%	45. Virginia	9.40%
21. Michigan	10.58%	46. South Dakota	9.39%
22. Mississippi	10.57%	47. Colorado	9.04%
23. Utah	10.55%	48. Tennessee	8.91%
U.S. Average	10.46%	49. Alabama	8.58%
24. Pennsylvania	10.35%	50. New Hampshire	8.45%
25. Iowa	10.34%		
Florida's			
5-Year History			
	Rank	Florida	U.S.
1999	41	9.6%	10.5%
2000	44	10.0%	11.2%
2001	45	9.3%	10.5%
2002	45	9.1%	10.3%
2003	44	9.4%	10.5%

*Source: Florida TaxWatch from U.S. Department of Commerce data, December 2005.
2003 local taxes estimated using data from the Tax Foundation.*

State Taxes as a Percentage Of Personal Income



Southeastern states are Alabama, Florida, Georgia, Mississippi, North Carolina, South Carolina, and Tennessee.
 Source: Florida TaxWatch and U.S. Department of Commerce data, December 2005.

State General Sales Tax Rates

as of January 1, 2005

7.25%	California
7%	Mississippi, Rhode Island, Tennessee
6.5%	Minnesota, Nevada, Washington
6.25%	Illinois, Texas
6%	Arkansas, Connecticut, Florida, Kentucky, Idaho, Indiana, Michigan, New Jersey, Ohio, Pennsylvania, Vermont, West Virginia
5.6%	Arizona
5.5%	Nebraska
5.3%	Kansas
5%	Iowa, Maine, Maryland, Massachusetts, New Mexico North Dakota, South Carolina, Virginia, Wisconsin
4.75%	Utah
4.5%	North Carolina, Oklahoma
4.25	New York
4.225%	Missouri
4%	Alabama, Georgia, Hawaii, Louisiana, South Dakota, Wyoming
2.9%	Colorado
No Tax	Alaska, Delaware, Montana, New Hampshire, Oregon

States changing rates from last year: Arkansas from 5.125% to 6%, California 6% to 7.25%, Indiana 5% to 6%, Ohio 5% to 6%, Virginia 3.5% to 5%.

California and Indiana's rates include a 1% statewide local rate.

Source: National Federation of Tax Administrators and Florida TaxWatch, December 2005.

Florida County Local Option Sales Tax Rates

2006 Tax Rates (as of November 2005)

1.5%	Escambia, Jackson, Leon, Monroe
1%	Baker, Bradford, Calhoun, Charlotte, Clay, Columbia, DeSoto, Dixie, Duval, Flagler, Gadsden, Gilchrist, Glades, Gulf, Hamilton, Hardee, Hendry, Highlands, Hillsborough, Holmes, Indian River, Jefferson, Lafayette, Lake, Levy, Liberty, Madison, Miami-Dade, Nassau, Okeechobee, Osceola, Pasco, Pinellas, Polk, Putnam, Sarasota, Seminole, Sumter, Suwannee, Taylor, Union, Wakulla, Walton, Washington
0.5%	Bay, Hernando, Manatee, Marion, Orange, Palm Beach, St. Lucie, Santa Rosa, Volusia
0.25%	Alachua
No Tax	Brevard, Broward, Citrus, Collier, Franklin, Lee, Martin, Okaloosa, St. Johns

Source: Florida Department of Revenue and Florida TaxWatch, December 2005.

Floridians' Selective Sales Tax Burden Climbs Above National Average

Per Capita State Selective Sales Taxes FY 2004

State	Dollars	State	Dollars
1. Vermont	\$693.46	27. New York	\$334.36
2. Nevada	668.03	U.S. Average	326.42
3. West Virginia	590.57	28. Mississippi	312.88
4. New Hampshire	518.73	29. New Mexico	312.74
5. Connecticut	506.04	30. Virginia	299.55
6. North Dakota	472.29	31. Michigan	291.68
7. Montana	471.47	32. Kansas	288.82
8. Rhode Island	463.21	33. Arkansas	284.96
9. Delaware	461.91	34. Iowa	277.53
10. Minnesota	454.33	35. Massachusetts	267.87
11. Hawaii	451.24	36. Nebraska	265.30
12. Illinois	440.77	37. Missouri	263.85
13. Louisiana	427.32	38. Idaho	262.91
14. Maryland	407.95	39. Alaska	257.09
15. Texas	407.32	40. Tennessee	254.10
16. New Jersey	399.88	41. Ohio	253.23
17. Alabama	393.60	42. Utah	243.85
18. Washington	393.53	43. Arizona	235.22
19. Pennsylvania	383.40	44. South Carolina	229.47
20. Kentucky	371.51	45. Wyoming	219.25
21. Florida	365.12	46. Colorado	214.04
22. South Dakota	361.70	47. Oklahoma	211.35
23. Indiana	344.26	48. California	208.32
24. Wisconsin	344.13	49. Oregon	208.31
25. North Carolina	341.57	50. Georgia	175.27
26. Maine	336.30		

Florida's 5-Year History	Rank	Dollars	% of U.S. Average
2000	29	\$257.81	93.0%
2001	27	\$261.86	94.7%
2002	27	\$269.94	94.7%
2003	25	\$324.57	107.8%
2004	21	\$365.12	111.9%

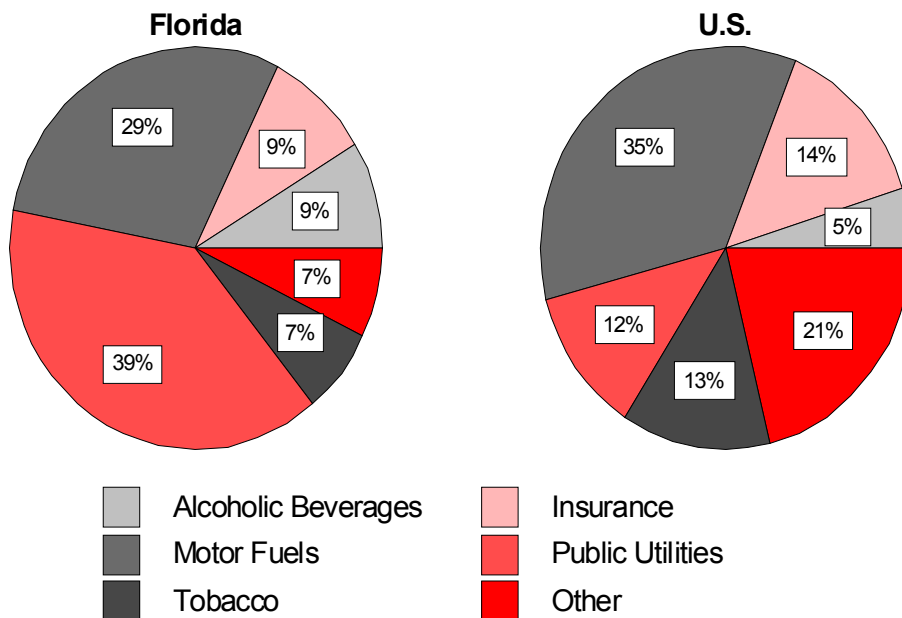
Source: Florida TaxWatch from U.S. Department of Commerce data, December 2005.

Florida Has Largest Beverage Tax Collections in the Nation; Change in Communications Tax Increases Utility Tax Rank
(per capita dollars - FY 2004)

Source	Florida	Rank	U.S. Average
Motor Fuels*	\$104.81	43	\$114.65
Utilities	\$143.95	1	\$ 39.17
Alcoholic Beverages	\$ 34.00	3	\$ 15.74
Tobacco	\$ 25.66	38	\$ 41.97
Insurance	\$ 32.94	43	\$ 47.00
Parimutuels	\$ 1.54	12	\$ 1.03

**Includes only state motor fuel taxes. When local taxes are considered, Florida's top gas tax rate is the highest in the nation.*

Percentage of Selective Sales Taxes Provided by Source
FY 2004



Source: Florida TaxWatch and U.S. Department of Commerce data, December 2005.

Florida's License Taxes Total Just Over \$100 Per Person, Far Less Than Nationally

Per Capita State License Taxes FY 2004

State	Dollars	State	Dollars
1. Delaware	\$1,063.12	26. North Carolina	\$119.10
2. Nevada	266.98	27. Nebraska	115.58
3. Montana	251.75	28. Washington	110.66
4. Oklahoma	238.48	29. Connecticut	109.95
5. Pennsylvania	205.37	30. Mississippi	109.71
6. Wyoming	200.62	31. Missouri	105.23
7. Iowa	191.44	32. Massachusetts	103.56
8. Illinois	187.64	33. Florida	102.02
9. North Dakota	186.71	34. Kansas	100.37
10. Minnesota	184.63	35. West Virginia	98.68
11. Texas	181.55	36. Hawaii	97.59
12. Oregon	181.09	37. Louisiana	95.01
13. South Dakota	180.13	38. Maryland	92.04
14. Tennessee	177.20	39. South Carolina	91.35
15. California	160.03	40. New Mexico	89.23
16. Vermont	159.03	41. Alabama	87.73
17. Idaho	158.51	42. Rhode Island	87.40
18. Ohio	158.26	43. Virginia	82.29
19. New Hampshire	153.21	44. Colorado	73.44
20. Michigan	152.82	45. Indiana	71.88
21. New Jersey	135.33	46. Georgia	69.96
U.S. Average	134.91	47. Arkansas	68.24
22. Wisconsin	132.48	48. Utah	65.11
23. Kentucky	130.84	49. New York	62.42
24. Alaska	127.84	50. Arizona	50.45
25. Maine	120.12		

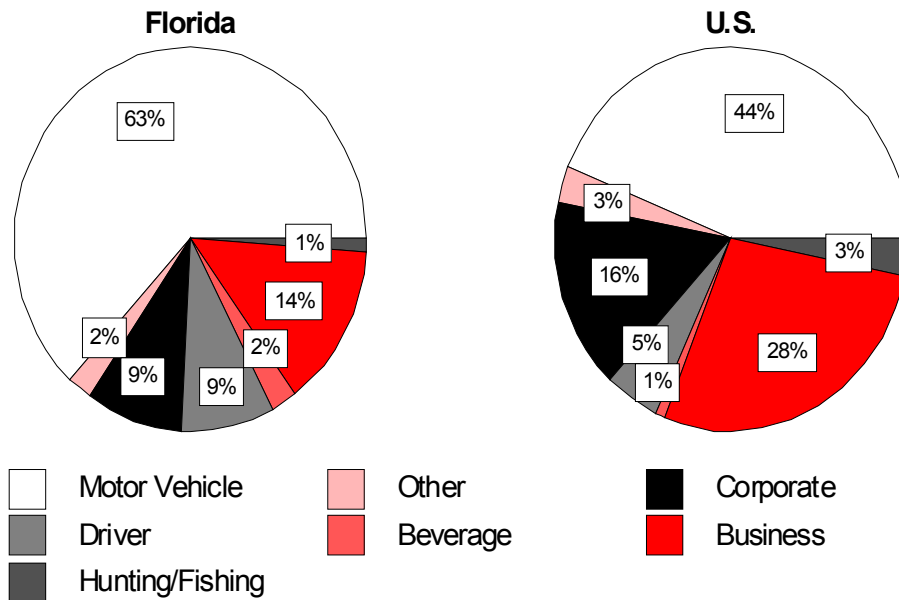
Florida's 5-Year History	Rank	Dollars	% of U.S. Average
2000	36	\$94.17	80.6%
2001	35	\$94.60	82.0%
2002	33	\$93.15	76.3%
2003	31	\$103.21	83.3%
2004	33	\$102.02	75.6%

Source: Florida TaxWatch from U.S. Department of Commerce data, December 2005.

What Makes Up Florida's \$102.02 Per Capita License Tax Burden?

Motor Vehicle Tags	\$64.66
Business Licenses	14.69
Corporate Fees	9.28
Driver Licenses	8.72
Beverage Licenses	1.98
Public Utility Licenses	1.59
Hunting & Fishing Licenses	0.83
Amusement Licenses	<u>0.26</u>
TOTAL	\$102.02

Percent of Total License Taxes by Source



Source: Florida TaxWatch and U.S. Department of Commerce data, December 2005.

Per Capita Corporate Income Tax Collections Up 7% in 2004, But Ranking Falls Seven Spots

Per Capita State Corporate Income Taxes FY 2004

State	Dollars	State	Dollars
1. Alaska	\$518.42	26. Maryland	\$80.51
2. New Hampshire	313.54	27. North Dakota	78.56
3. Delaware	262.37	28. Florida	77.36
4. New Jersey	218.07	29. Idaho	74.50
5. Massachusetts	202.75	30. Montana	73.06
6. California	192.95	31. New Mexico	72.62
7. Michigan	182.04	32. Arkansas	66.05
8. Illinois	162.70	33. Alabama	64.47
9. Pennsylvania	135.26	34. Rhode Island	64.27
10. Minnesota	124.91	35. South Dakota	61.10
11. Wisconsin	123.80	36. Kansas	60.90
12. Tennessee	117.74	37. Utah	60.70
13. Connecticut	108.40	38. Virginia	56.58
14. New York	106.34	39. Georgia	56.03
U.S. Average	105.09	40. Louisiana	52.42
15. Indiana	103.36	41. Colorado	52.07
16. Vermont	100.21	42. South Carolina	46.81
17. West Virginia	100.01	43. Hawaii	46.02
18. North Carolina	98.01	44. Missouri	38.99
19. Nebraska	95.84	45. Oklahoma	37.83
20. Ohio	92.56	46. Iowa	30.41
21. Kentucky	92.03		
22. Arizona	91.51		
23. Oregon	89.03		
24. Maine	84.75		
25. Mississippi	84.00		

**Nevada, Texas
Washington, and
Wyoming have no state
corporate income tax.**

**South Dakota's applies
to financial institutions
only.**

Florida's 5-Year History	Rank	Dollars	% of U.S. Average
2000	35	\$74.01	64.3%
2001	26	\$97.20	87.3%
2002	20	\$72.93	81.1%
2003	21	\$72.09	73.5%
2004	28	\$77.36	73.6%

Source: Florida TaxWatch from U.S. Department of Commerce data, December 2005.

State Corporate Income Tax Rates 2005 Tax Rates



*Note: Michigan imposes a single business tax (or value added tax) of 1.9% on federal taxable income of the business, compensation paid to employees, dividends, interest, royalties paid and other items. Texas imposes a franchise tax of 4.5% of earned surplus.

Source: National Federation of Tax Administrators and Florida TaxWatch, December 2005

Florida is One of Seven States Without a Personal Income Tax

Per Capita State Personal Income Taxes FY 2004

State	Dollars	State	Dollars
1. Massachusetts	\$1,376.08	26. Montana	\$653.27
2. New York	1,281.91	27. Idaho	651.68
3. Connecticut	1,232.75	28. Michigan	650.26
4. Oregon	1,187.97	29. Missouri	646.52
5. Minnesota	1,119.31	30. Illinois	640.20
6. California	1,014.07	31. Arkansas	612.27
7. Virginia	994.92	32. Indiana	610.43
8. Maryland	949.59	33. Pennsylvania	590.31
9. Delaware	941.22	34. West Virginia	588.55
10. Hawaii	925.74	35. South Carolina	580.92
11. Wisconsin	916.97	36. New Mexico	529.29
12. Maine	880.81	37. Alabama	495.26
13. New Jersey	850.76	38. Louisiana	484.29
14. North Carolina	848.94	39. Arizona	403.18
15. Rhode Island	832.51	40. Mississippi	365.73
16. Georgia	773.64	41. North Dakota	337.51
17. Ohio	759.68	42. New Hampshire	42.13
18. Colorado	741.99	43. Tennessee	24.89
19. Nebraska	711.28		
20. Utah	708.36		
21. Kansas	700.12		
22. Vermont	692.14		
23. Kentucky	680.03		
U.S. Average	673.56		
24. Iowa	663.07		
25. Oklahoma	658.09		

Alaska, Florida, Nevada, South Dakota, Texas, Washington, and Wyoming have no state personal income tax.

Florida's 5-Year History	Per Capita Per Income	Rank	% of U.S. Average
2000	\$28,509	20	95.5%
2001	\$29,268	21	95.7%
2002	\$29,700	21	96.4%
2003	\$30,116	23	95.6%
2004	\$31,460	24	95.2%

Source: Florida TaxWatch from U.S. Department of Commerce data, December 2005.

Florida Has Nation's Largest Documentary Stamp and Stock Transfer Tax Collections

Per Capita Documentary Stamp & Stock Transfer Taxes FY 2003

State	Dollars	State	Dollars
1. Florida	\$186.85	23. Arkansas	\$9.43
2. Delaware	118.74	24. Illinois	7.17
3. New Hampshire	111.82	25. North Carolina	6.43
4. Washington	103.17	26. West Virginia	5.58
5. Minnesota	69.08	27. Nebraska	5.27
6. Connecticut	50.18	28. Iowa	4.69
7. Virginia	45.66	29. Oklahoma	3.42
8. Nevada	41.41	30. Oregon	1.75
9. Massachusetts	38.32	31. Missouri	1.38
10. Pennsylvania	37.95	32. Kentucky	0.83
11. New York	37.80	33. South Dakota	0.18
12. Vermont	33.43	34. Georgia	0.05
13. Maryland	32.96		
14. Michigan	31.39		
15. Tennessee	29.52		
16. New Jersey	28.34		
U.S. Average	27.10		
17. Maine	22.31		
18. Hawaii	14.59		
19. Wisconsin	12.04		
20. South Carolina	12.03		
21. Rhode Island	11.70		
22. Alabama	9.95		

Alaska, Arizona, California, Colorado, Idaho, Indiana, Kansas, Louisiana, Mississippi, Montana, New Mexico, North Dakota, Ohio, Texas, Utah, and Wyoming have no documentary stamp stock transfer taxes.

Florida's 5-Year History	Rank	Dollars	% of U.S. Average
2000	1	\$90.07	601.3%
2001	1	\$93.97	599.3%
2002	1	\$113.73	642.2%
2003	1	\$145.88	674.1%
2004	1	\$186.85	689.5%

Source: Florida TaxWatch from U.S. Department of Commerce data, December 2005.

Per Capita Local Property Tax Collections Close to National Average

Per Capita Local Taxes FY 2002

State	Dollars	State	Dollars
1. New Jersey	\$1,870.85	26. North Dakota	\$837.48
2. Connecticut	1,733.30	27. California	808.59
3. Maine	1,436.07	28. Michigan	786.96
4. New York	1,400.75	29. Georgia	771.19
5. Rhode Island	1,366.63	30. South Carolina	751.02
6. Massachusetts	1,359.57	31. Montana	737.25
7. New Hampshire	1,307.05	32. Nevada	733.20
8. Illinois	1,256.72	33. Arizona	721.67
9. Alaska	1,217.41	34. Washington	714.21
10. Wisconsin	1,171.78	35. Idaho	713.90
11. Texas	1,128.80	36. Vermont	701.65
12. Wyoming	1,098.93	37. Missouri	679.46
13. Nebraska	1,009.54	38. North Carolina	652.28
14. Iowa	980.55	39. Utah	611.97
15. Minnesota	976.95	40. Tennessee	596.18
16. Indiana	969.46	41. Mississippi	573.68
17. Maryland	944.40	42. Hawaii	497.92
U.S. Average	937.51	43. West Virginia	497.05
18. Ohio	931.19	44. Delaware	496.20
19. Colorado	925.34	45. Louisiana	425.65
20. Virginia	919.72	46. Oklahoma	424.93
21. Florida	918.81	47. New Mexico	379.07
22. Kansas	910.55	48. Kentucky	376.33
23. Oregon	884.05	49. Alabama	285.30
24. Pennsylvania	880.91	50. Arkansas	190.92
25. South Dakota	879.01		
	Florida's		% of U.S.
	5-Year History	Rank	Dollars
			Average
	1998	18	\$787.87
	1999	17	\$814.29
	2000	21	\$834.43
	2001	21	\$876.62
	2002	21	\$918.81

Source: Florida TaxWatch from U.S. Department of Commerce data, December 2005.

Florida Has Third Fastest Growth In State Taxation Since 2000

Growth in Total State Tax Collections FY 2000-2004

State	Dollars	State	Dollars
1. Wyoming	56.15%	27. Minnesota	10.47%
2. Nevada	27.48%	28. Oklahoma	10.05%
3. Florida	23.98%	29. Kentucky	9.99%
4. Louisiana	23.23%	U.S. Average	9.98%
5. Tennessee	23.21%	30. New York	9.82%
6. Nebraska	22.10%	31. Alabama	9.01%
7. Vermont	19.12%	32. Kansas	8.98%
8. Maryland	18.93%	33. Maine	8.86%
9. Arizona	18.59%	34. Mississippi	8.77%
10. Rhode Island	18.38%	35. North Carolina	8.23%
11. Indiana	18.34%	36. Georgia	7.84%
12. New Hampshire	18.24%	37. New Mexico	6.91%
13. New Jersey	15.62%	38. South Carolina	6.62%
14. Hawaii	15.43%	39. Missouri	6.39%
15. Montana	15.24%	40. Michigan	5.73%
16. South Dakota	14.61%	41. Utah	5.29%
17. Arkansas	14.58%	42. North Dakota	4.82%
18. Ohio	14.23%	43. Massachusetts	3.38%
19. Pennsylvania	12.82%	44. Oregon	2.65%
20. Virginia	12.53%	45. California	2.28%
21. West Virginia	12.14%	46. Connecticut	1.18%
22. Texas	12.13%	47. Colorado	-0.33%
23. Illinois	11.86%	48. Wisconsin	-0.35%
24. Delaware	11.41%	49. Iowa	-1.01%
25. Idaho	11.38%	50. Alaska	-9.49%
26. Washington	10.57%		

Florida's		U.S.	
Annual Growth	Rank	Growth	Average
2001	38	0.49%	3.71%
2002	8	1.66%	-4.38%
2003	7	6.47%	2.58%
2004	5	13.98%	8.11%

Source: Florida TaxWatch from U.S. Department of Commerce data, December 2005.

Business Pays Nearly Half of All State and Local Taxes in Florida

Share of Total State and Local Taxes Paid by Business FY 2003

State	Percent	State	Percent
1. Alaska	77%	26. Kansas	43%
2. Wyoming	69%	27. Michigan	41%
3. New Hampshire	64%	28. Colorado	41%
4. South Dakota	58%	29. Kentucky	41%
5. Louisiana	57%	30. New Jersey	41%
6. Texas	56%	31. Alabama	41%
7. Delaware	56%	32. New York	40%
8. Montana	55%	33. California	40%
9. North Dakota	54%	34. Pennsylvania	40%
10. Washington	54%	35. Idaho	40%
11. New Mexico	50%	36. Missouri	39%
12. Tennessee	50%	37. Ohio	39%
13. Florida	48%	38. Arkansas	39%
14. West Virginia	48%	39. Georgia	39%
15. Illinois	48%	40. Minnesota	38%
16. Vermont	47%	41. Massachusetts	38%
17. Nevada	47%	42. Hawaii	38%
18. Arizona	47%	43. Connecticut	37%
19. Maine	46%	44. Indiana	37%
20. Rhode Island	46%	45. Virginia	37%
21. Nebraska	45%	46. Wisconsin	37%
22. Mississippi	45%	47. North Carolina	36%
23. Oklahoma	44%	48. Oregon	35%
24. Iowa	43%	49. Utah	34%
25. South Carolina	43%	50. Maryland	32%
U.S. Average	43%		

Source: Council on State Taxation from Ernst & Young calculations, January 2004.

This report was researched and written by
Kurt Wenner, Senior Research Analyst
under the direction of
Mary Lou Rajchel, Vice President of Research.
Michael Jennings, Chairman; Dominic M. Calabro, President and Publisher.
www.floridatwatch.org

© Copyright Florida TaxWatch, January 2006

Florida
TaxWatch



106 N. Bronough St.
P.O. Box 10209
Tallahassee, FL 32302

NON-PROFIT ORG.

U.S. POSTAGE
PAID

TALLAHASSEE, FL
Permit No. 409